

Homework # 23

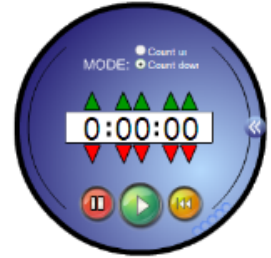
Assignment: Subtraction of w/s. integers.

Bell Work



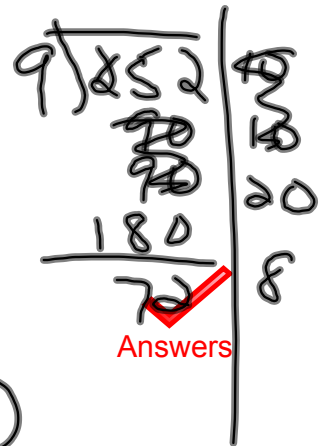
Date: 9/16

[www.mathvizza.com](http://www.mathvizza.com)



Directions: Factor Tree 1008

Prime Factorization





Bell Work-Answers

Directions:

Essential Questions

---

Objectives/Skills



A set of horizontal blue lines for writing, with a vertical red margin line on the left side.

Time Table

→	0-5	Bell Work
→	5-10	
→	10-20	
→	20-30	
→	30-40	
→	40-50	
→	50-60	
→	60-70	
→	70-80	
→	80-90	



"If you fail to plan, then you plan to fail"